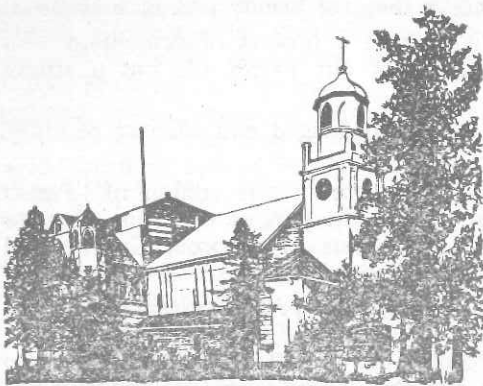


PARISH MESSENGER

SUPPLEMENT TO THE CHURCH NEWS, APRIL, 1977



Parishioners are asked to plan this day so as to attend the 10 a.m. Service and then be at home when our visitors call later in the day. However, provision will be made for those who will not be home to fill out their Commitment Card in the Parish Centre following the Service.

ST. JOHN'S

STEWARDSHIP SUNDAY

17th APRIL, 1977

"They first gave themselves to the Lord"

10 A.M. — HOLY COMMUNION

Preacher:

The Assistant Bishop of Tasmania and former Rector of St. John's, the Rt. Rev. H. A. Jerrim, Th.L., E.D.

Followed by Morning Tea in the Parish Centre.

On this day the preacher at 8 a.m. will be the Revd. Dr. A. Gill of the Australian Council of Churches. Breakfast will be available in the Parish Centre.

At the 7 p.m. Service of Evensong the Rector will preach.

CHURCH OF ST. JOHN — LAUNCESTON

SUNDAY SERVICES

Holy Communion: 8.00 a.m. Every Sunday; 10.00 a.m. First, Third and Fifth Sundays, 7 p.m. Fourth Sunday.

Family Service: 10.00 a.m. Second Sunday.

Morning Prayer: 10.00 a.m. Fourth Sunday.

Evensong: 7 p.m. First, Second, Third and Fifth Sundays.

WEEKDAY SERVICES: (In the Chapel).

Morning Prayer, daily at 8.00 a.m. (Holy Communion, Saints' Days).

Wednesday: 10.30 a.m. Holy Communion.

Rector:
The Revd. Ian Booth, Th.L.
Telephone 31 5218

Assistants:
The Revd. David Le Rossignol, Th.L.
Telephone 31 4896
The Revd. Harry Ikin, L.Th.

SPECIAL MESSAGE FROM THE RECTOR

Dear Parishioners,

Demolition can be dangerous! When it is complete it leaves nothing of value. On the other hand, building when carefully planned and efficiently carried out produces a thing of beauty and of usefulness.

To neglect the challenge of building-up the life of our parish is to start a process of demolition! To accept the challenge, I am certain, will mean not just the maintenance of our parish life but a strong building-up of it.

This calls for your enthusiastic and sacrificial participation as well as dedicated and efficient planning on the part of the Vestry and its committees.

The material needs of our parish are brought to your attention elsewhere in this edition of "Parish Messenger". The meeting of these needs will demand a deep searching on the part of each one of us to make a commitment of time and money consistent with today's inflationary costs, our improved income and the scriptural principles of tithing and sacrificial giving as they apply to modern life.

Most of all we need you! Vital and effective work for God is achieved by people responding to the demands of his love.

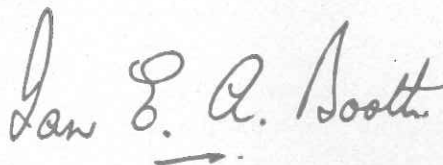
Through a strong and committed Parish Family can come a fellowship and strength to mould us into an effective force under the guidance of the Holy Spirit. Such an effective force, providing opportunities of spiritual growth and worship, will be equipped to reach out into the local community and beyond with the Good News of Jesus Christ.

Prayerful and practical action leading to an increase, firstly, in the giving of ourselves in worship and witness and secondly, in the giving of our money and sacrificial service, is the right approach to meeting the growing need of resources for building-up the work of our church.

Will you face this challenge with me in a spirit of sacrifice worthy of the love God has made known and available to us in our Saviour Jesus Christ?

Yours sincerely,

IAN E. A. BOOTH, Rector.



A WORD FROM MAX EASTHER

To all parishioners,

Nearly two years ago we commenced our present Programme, which was introduced to stimulate interest in our church and to increase church membership. The second object was to get the financial side of our church on a firmer basis by asking all St. John's people to consider their giving carefully and generously, and then to pledge themselves to try and give a weekly amount. A number of parishioners have since been maintaining their support towards the work of the church.

Over the last two years St. John's has lost quite a lot of its keen church members, some through death and some through transfer to other places or parishes. However, many new people have come to St. John's

parish and to all such people an opportunity is now to be given to join the majority of church members who are regular supporters of the church with their money.

May I strongly commend the practice of using envelopes for the weekly offering as this ensures that we give strong and committed support to the ongoing needs of our parish. Also if, for any reason, a person is unable to attend church on a particular Sunday, his offering is not overlooked, for the expenses of the church as well as its own giving to Missions etc. continue whether we are present or not.

On Sunday, 17th April, a Vestryman or committee member will call upon you to talk about what St. John's and the Church are doing, to invite your interest in maintaining your part in the church's worship and activities and to ask that you, too, will pledge to give a regular amount as your contribution to church funds.

MAX EASTHER, Church Warden.

CALENDAR FOR APRIL

1 Friday	8 a.m. Holy Communion. 8 p.m. C.M.S. Fellowship Night.	14 Thursday	6 p.m. C.E.B.S. 7.30 p.m. Junior Choir Practice. 7.45 p.m. Women's Guild. 8 p.m. Choir Practice.
3 Palm Sunday	8 a.m. Holy Communion. 10 a.m. Sunday School. 10 a.m. Holy Communion. Annal Batman Commemoration Service. 7 p.m. Evensong.	15 Friday	St. Mary Magdalen 8 a.m. Holy Communion. 6 p.m. Special Men's Tea, Speaker: Bishop H. A. Jerrim.
4 Monday	8 a.m. Holy Communion. 7.30 p.m. O.S.L. Prayer Meeting.	17 Easter I	St. John's Stewardship Sunday 8 a.m. Holy Communion, Preacher: Dr. A. Gill, Australian Council of Churches. 10 a.m. Sunday School. 10 a.m. Holy Communion, Preacher: Bishop H. A. Jerrim. Followed by Morning Tea in the Parish Centre. 7 p.m. Evensong.
5 Tuesday	8 a.m. Holy Communion.	18 Monday	2.45 p.m. St. John's Auxiliary to St. Luke's Hospital. 8 p.m. Order of St. Luke.
6 Wednesday	8 a.m. Holy Communion. 9 a.m. Bible Discussion, C.M.S. House. 10.30 a.m. Holy Communion, Morning Tea provided in the Parish Centre after the Service. 6 p.m. G.F.S. 7.15 p.m. Holy Communion. 7.30 p.m. Education Committee. 8 p.m. Property Committee.	19 Tuesday	7.45 p.m. Mothers' Union.
7 Thursday	8 a.m. Holy Communion. 6 p.m. C.E.B.S. 7.30 p.m. Commemoration of the Institution of the Holy Communion.	20 Wednesday	9 a.m. Bible Discussion, C.M.S. House. 10.30 a.m. Holy Communion. 6 p.m. G.F.S.
8 Good Friday	8 a.m. Passion Liturgy. 10 a.m. Family Service. noon to 3 p.m. Three Hours Service. 7 p.m. Music of the Passion and Readings.	21 Thursday	6 p.m. C.E.B.S. 7.30 p.m. Junior Choir Practice. 8 p.m. Choir Practice.
10 Easter Day	7 a.m. Holy Communion. 8 a.m. Holy Communion. No Sunday School. 10 a.m. Holy Communion. 11.30 a.m. Meals on Wheels. 7 p.m. Evensong.	24 Easter II	8 a.m. Holy Communion. 10 a.m. Sunday School. 10 a.m. Mattins. 7 p.m. Holy Communion.
11 Monday	8 a.m. Holy Communion.	25 Monday	St. Marks Day 8 a.m. Holy Communion.
12 Tuesday	8 a.m. Holy Communion. See Friday, 15th — Men's Tea.	26 Tuesday	7.45 p.m. G.F.S. Townsend.
13 Wednesday	9 a.m. Bible Discussion, C.M.S. House. 10.30 a.m. Holy Communion. 6 p.m. G.F.S. 7.30 p.m. Vestry.	27 Wednesday	9 a.m. Bible Discussion, C.M.S. House. 10.30 a.m. Holy Communion. 6 p.m. G.F.S.
		28 Thursday	6 p.m. C.E.B.S. 7.30 p.m. Junior Choir Practice. 8 p.m. Choir Practice.